

# The Ultimate Riverdale Quiz



Lili Reinhart as Betty, KJ Apa as Archie, and Camila Mendes as Veronica in "Chapter One Hundred: The Jughead Paradox"

The CW -- (C) 2021 The CW Network, LLC. All Rights Reserved.

**How well do you know the twisted tales of Archie and the gang? Put your super fan skills to the test before the series returns on March 20!**

By Carrie Berk



**Ring In The New Year With New Year's Eve Live: Nashville's Big Bash**



**7 Things That Make Jay Will's Day**

## TRENDING

**Gary Cole: Agent Of Change**

**8 Reasons To Love Frank Reagan**

**NCIS: Los Angeles: G. Callen And Sam Hanna's Best Bromantic Moments**

**CSI: Vegas: Gil Grissom and Sara Sidle's Best "GSR" Moments**

**The Best Crosswalk Musicals From The Late Late Show With James Corden**

**CSI Quiz: Are You A Fanatic?**



The past six seasons of *Riverdale* have explored murder, masked villains and even musicals. Core four Archie, Jughead, Betty, and Veronica had their fair share of near-death experiences and, of course, Pop's Chock'lit Shoppe milkshakes. But how well do you remember what went down in their small town?

Test your knowledge of the series' characters, couples, locations, and biggest plot twists in the ultimate fan quiz below. The story may be inspired by the light-hearted Archie Comics, but it's your mission to uncover The CW adaptation's dark mysteries.

**Get all 10 correct:** You're a *Riverdale* expert! Archie and the squad applaud you.

**Get 8 right:** You know your stuff! Just a few more hours of study hall at Riverdale High, and you'll be good to go.

**Get 6 right:** You certainly remember *Riverdale*, but you could benefit from a binge-watch of the most memorable episodes. Season finales are where most secrets are revealed!

**Get 5 or fewer right:** You're a bit rusty on your *Riverdale* knowledge. Start brushing up on key characters, locations, and plot lines to get back on track.

Watch all your favorite shows on **CBS** and streaming on **Paramount+**!

*Riverdale* is back with new episodes! You can also stream *Riverdale* on **CWTV.com** and The CW App.



SUBSCRIBE NOW

By viewing our video content you are accepting the terms of our Video Services Policy.

# 1. What is the name of Cheryl Blossom's twin brother who died?



Cheryl Blossom's late brother, in "Chapter One Hundred: The Jughead Paradox"

The CW -- (C) 2021 The CW Network, LLC. All Rights Reserved.



SUBSCRIBE NOW

By viewing our video content you are accepting the terms of our Video Services Policy.

© 2022 CBS Interactive. All rights reserved.

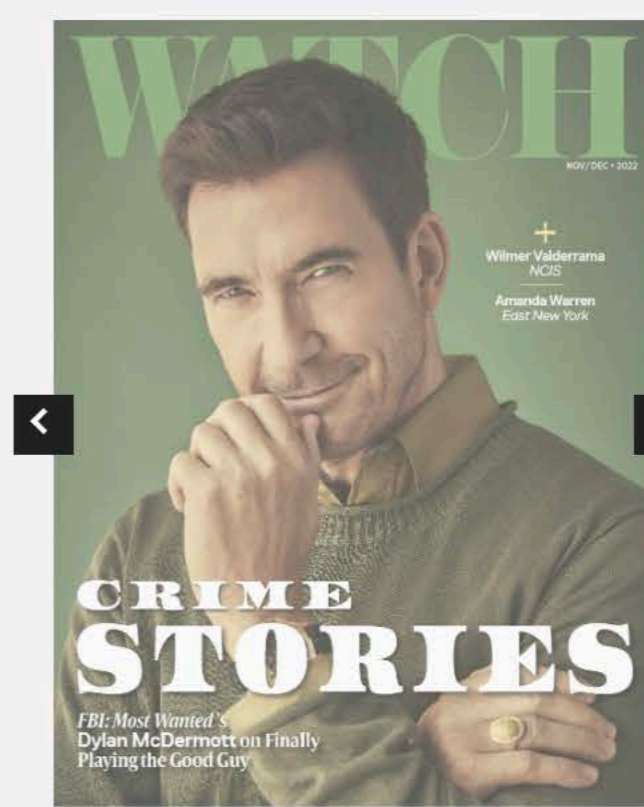
Follow us:



- A) Josh
- B) Jason
- C) Jonathan
- D) Jake

To find out the answer, go to the next question!

## 2. Who are the members of Josie and the Pussycats?



SUBSCRIBE NOW

By viewing our video content you are accepting the terms of our Video Services Policy.

© 2022 CBS Interactive. All rights reserved.

Follow us:





Gettin the band back together in "Chapter Ninety-One: The Return of The Pussycats"

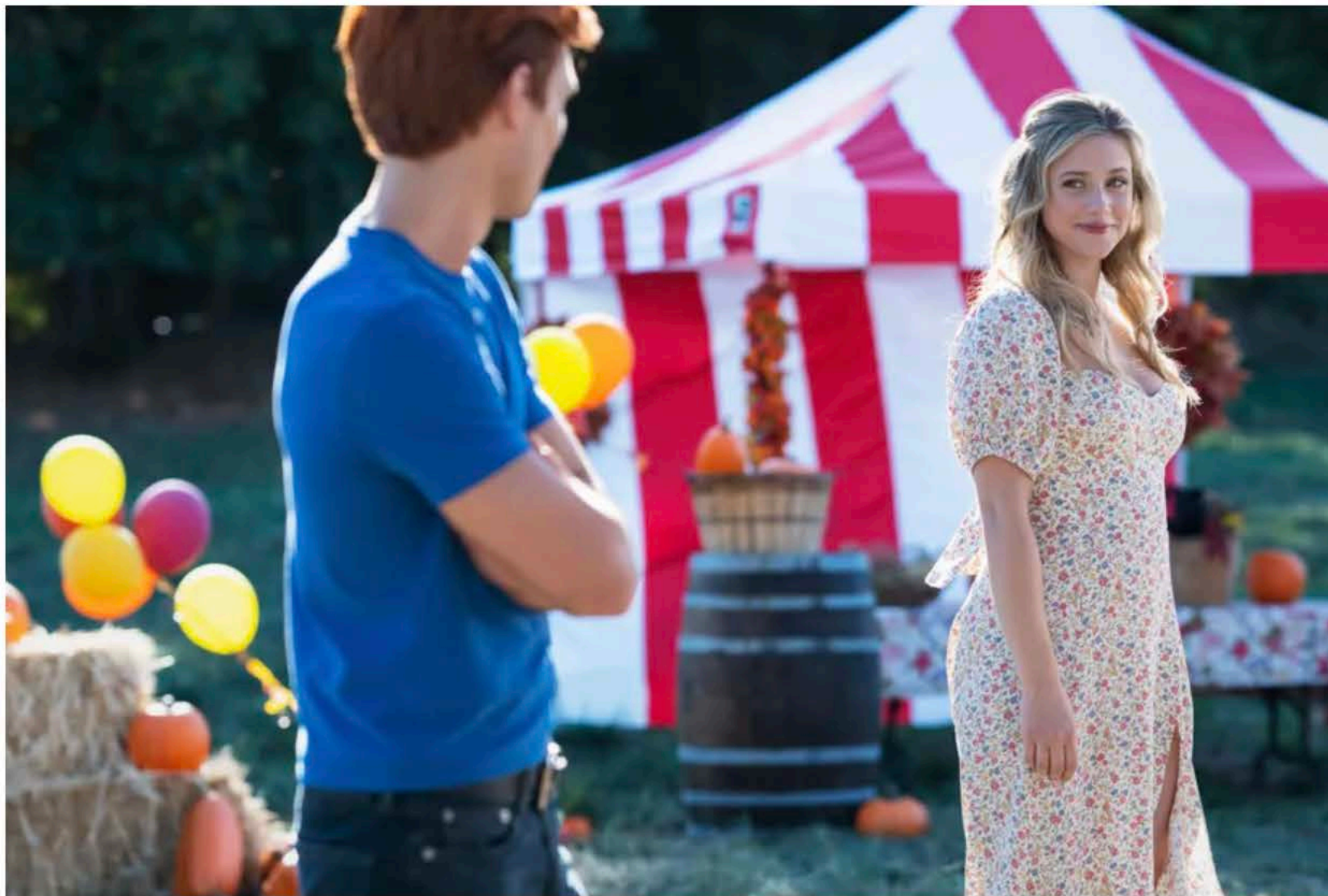
The CW -- (C) 2021 The CW Network, LLC. All Rights Reserved.

**Answer to Question 1: B**

- A) Josie, Valerie, Melody
- B) Josie, Veronica, Betty
- C) Josie, Cheryl, Toni
- D) Josie, Sabrina, Prudence

**3. In season six, the name of the series was changed for a five-episode event. What was the new name?**

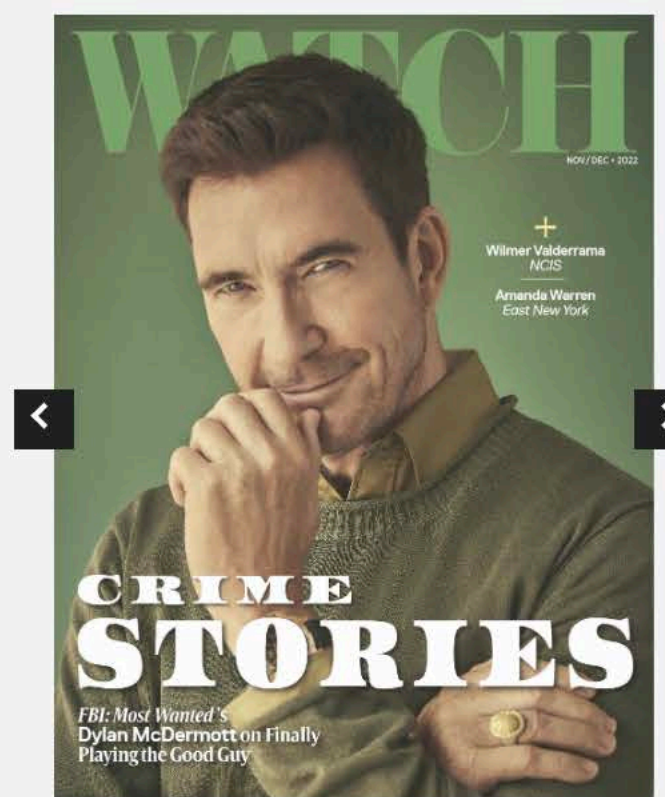




Betty gives Archie a sidelong smile in a scene from "Chapter Ninety-Six," part of a special five-episode event.

Kailey Schwerman/The CW -- (C) 2021 The CW Network, LLC. All rights reserved.

**Answer to Question 2: A**



SUBSCRIBE NOW

By viewing our video content you are accepting the terms of our Video Services Policy.

© 2022 CBS Interactive. All rights reserved.

Follow us:



A) *The Chilling Adventures of Riverdale*

B) *Riverbale*

C) *Riverdale Rewind*

D) *Rivervale*

4. What is the name of Veronica's speakeasy in the basement of Pop's?



SUBSCRIBE NOW

By viewing our video content you are accepting the terms of our Video Services Policy.

© 2022 CBS Interactive. All rights reserved.

Follow us:



Veronica has a sit-down with the criminal element, Elio (Julian Haig), in "Chapter Fifty-Three: Jawbreaker."

Diyah Pera/The CW -- (C) 2019 The CW Network, LLC. All rights reserved.

### Answer to Question 3: D

- A) La Bonne Nuit
- B) Bonne Soirée
- C) The Whyte Worm
- D) Blue Velvet

### 5. What is the key product in Cheryl Blossom's family business?



[SUBSCRIBE NOW](#)

By viewing our video content you are accepting the terms of our Video Services Policy.

© 2022 CBS Interactive. All rights reserved.

Follow us:







A tense Penelope (Nathalie Boltt) and Cheryl Blossom (Madelaine Petsch) at Polly Blossom's baby shower in "Chapter Eight: The Outsiders"

Dean Buscher/The CW -- (C) 2017 The CW Network. All Rights Reserved

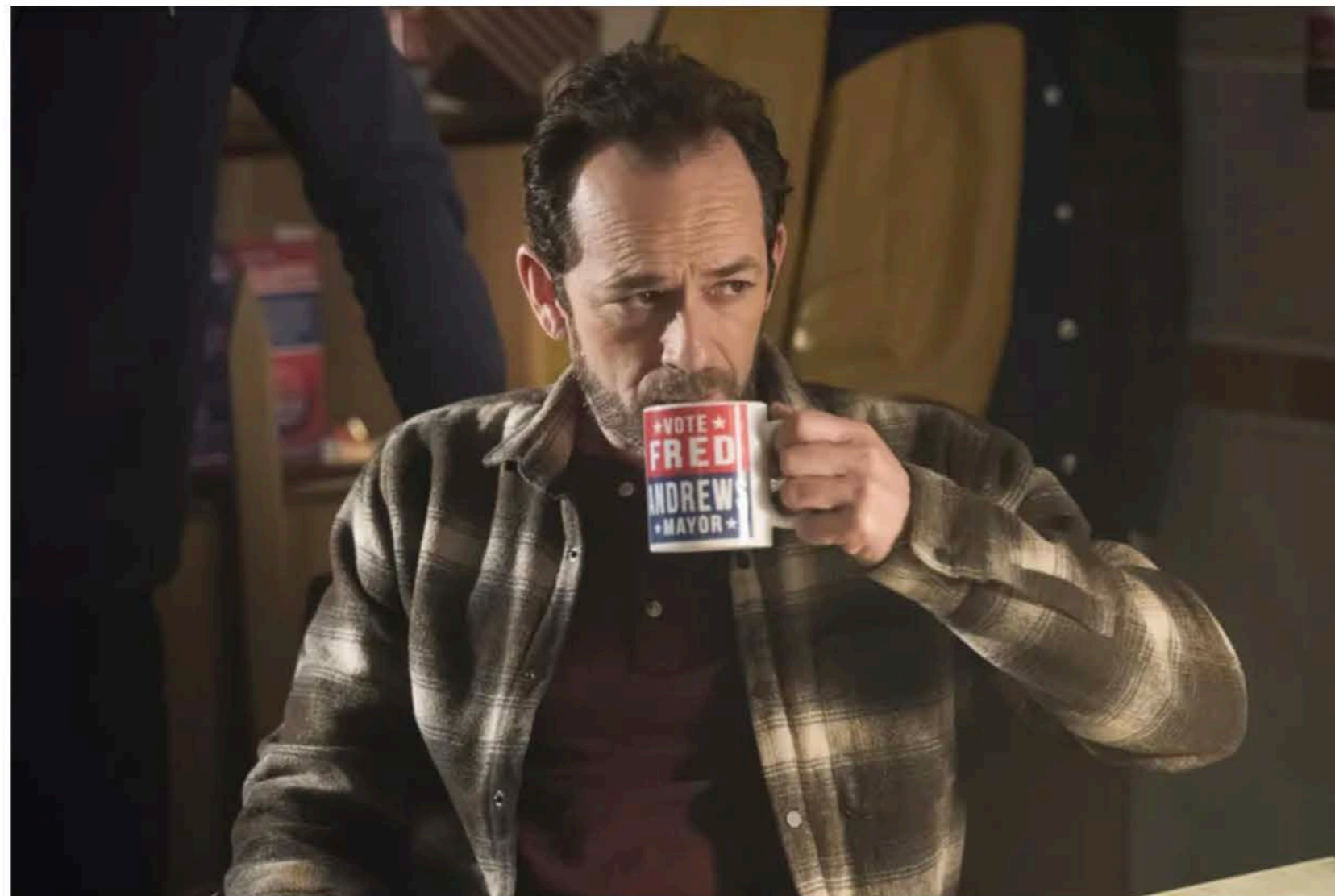
**Answer to Question 4: A**

- A) Oil
- B) Apples
- C) Maple syrup
- D) Cotton

**6. Who shot Fred Andrews in Season 2?**



## 6. Who shot Fred Andrews in Season 2?



Archie's dad, Fred Andrews, during his mayoral campaign in "Chapter Thirty-Five: Brave New World"

Dean Buscher/The CW -- (C) 2018 The CW Network, LLC. All rights reserved.

**Answer to Question 5: C**



[SUBSCRIBE NOW](#)

By viewing our video content you are accepting the terms of our Video Services Policy.

© 2022 CBS Interactive. All rights reserved.

Follow us:



- A) The Gargoyle King
- B) The Trash Bag Killer
- C) Hiram Lodge
- D) The Black Hood

7. What was the name of the musical the characters put on in Season 3?



The cast onstage in their high school musical in "Chapter Fifty-One: BIG FUN"

Dean Buscher/The CW -- (C) 2019 The CW Network, LLC. All rights reserved.

Answer to Question 6: D



SUBSCRIBE NOW

By viewing our video content you are accepting the terms of our Video Services Policy.

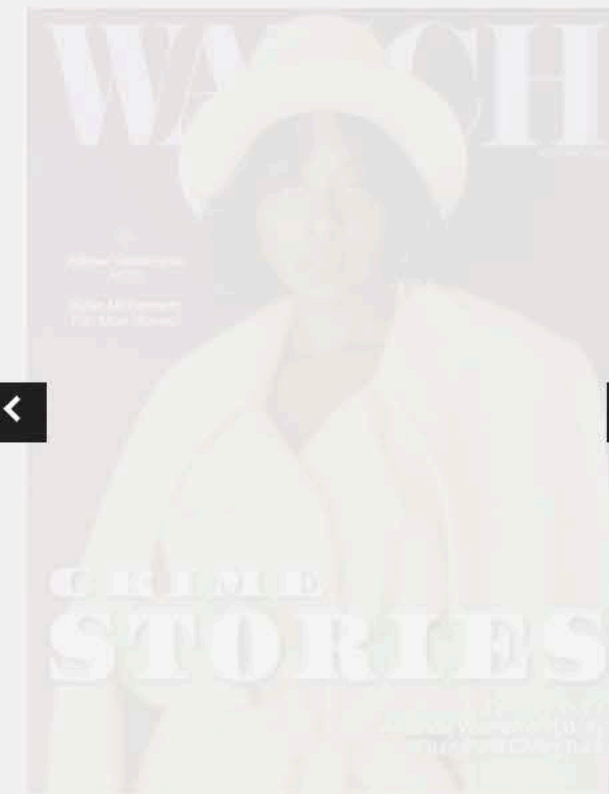
© 2022 CBS Interactive. All rights reserved.

Follow us:



- A) *Heathers*
- B) *Carrie*
- C) *Hedwig and the Angry Inch*
- D) *Assassins*

**8. Who set Pop's on fire in the finale of Season 5?**



SUBSCRIBE NOW

By viewing our video content you are accepting the terms of our Video Services Policy.

© 2022 CBS Interactive. All rights reserved.

Follow us:



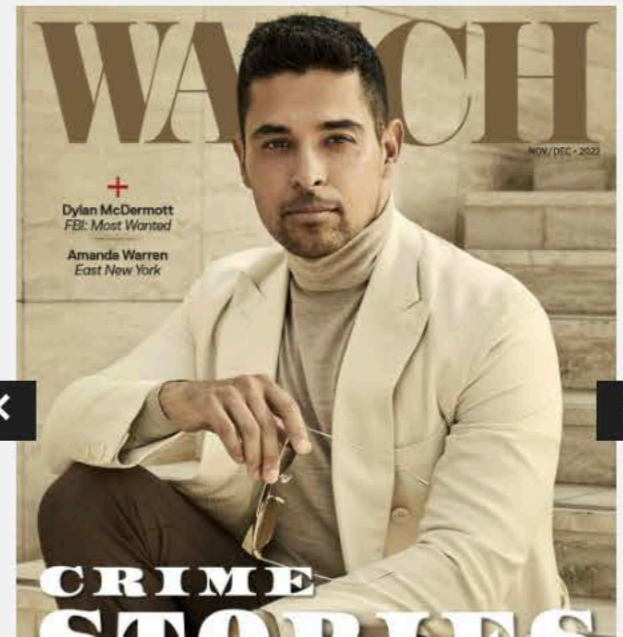
Veronica, Toni, and Archie in a booth at Pop's in "Chapter Eighty-One: The Homecoming"

Dean Buscher/The CW -- (C) 2021 The CW Network, LLC. All Rights Reserved.

### Answer to Question 7: A

- A) The Serpents
- B) The Ghoulies
- C) The Farm
- D) The Midnight Club

9. What is The Farm?





Chad Michael Murray as Edgar Evernever, the force behind The Farm, in "Chapter Fifty-Seven: Survive the Night"

Shane Harvey/The CW -- (C) 2019 The CW Network, LLC. All rights reserved.

**Answer to Question 8: B**



SUBSCRIBE NOW

By viewing our video content you are accepting the terms of our Video Services Policy.

© 2022 CBS Interactive. All rights reserved.

Follow us:



- A) A cult selling human organs
- B) A maple syrup factory
- C) An organic farmer's market
- D) The name of the local newspaper that Alice edits

**10. How does Archie raise money for the Fred Andrews Community Center (previously known as El Royale Fight Club)?**



SUBSCRIBE NOW

By viewing our video content you are accepting the terms of our Video Services Policy.

© 2022 CBS Interactive. All rights reserved.

Follow us:





Veronica and Archie next to Drew Ray Tanner as Fangs Fogarty in "Chapter Fifty-Three: Jawbreaker"

Katie Yu/The CW -- (C) 2019 The CW Network, LLC. All rights reserved.

### Answer to Question 9: A

- A) A bake sale
- B) A raffle
- C) A book fair at Riverdale High
- D) A car wash

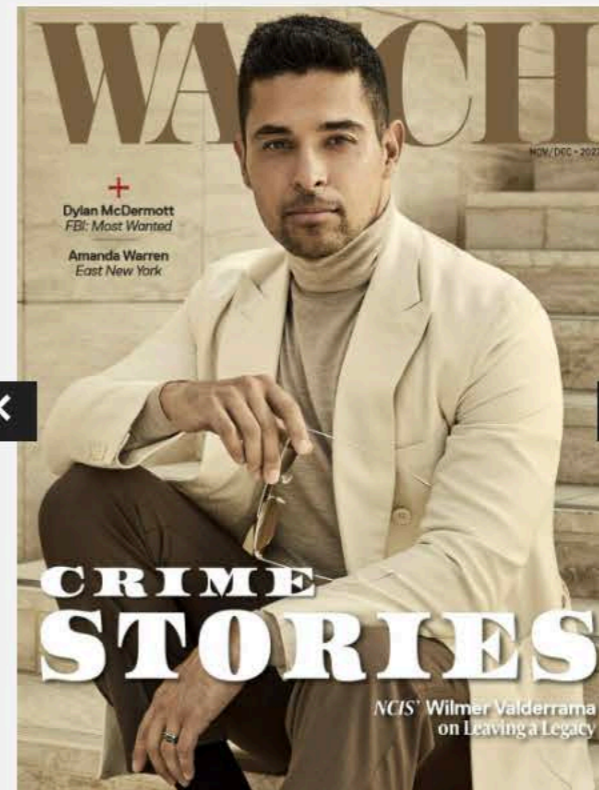
### Answer to Question 10: D

Watch all your favorite shows on **CBS** and streaming on **Paramount+!**

**Riverdale** is back with new episodes! You can also stream **Riverdale** on **CWTV.com** and The CW App.

SHOW LESS

RIVERDALE



SUBSCRIBE NOW

By viewing our video content you are accepting the terms of our Video Services Policy.

© 2022 CBS Interactive. All rights reserved.

Follow us:

